

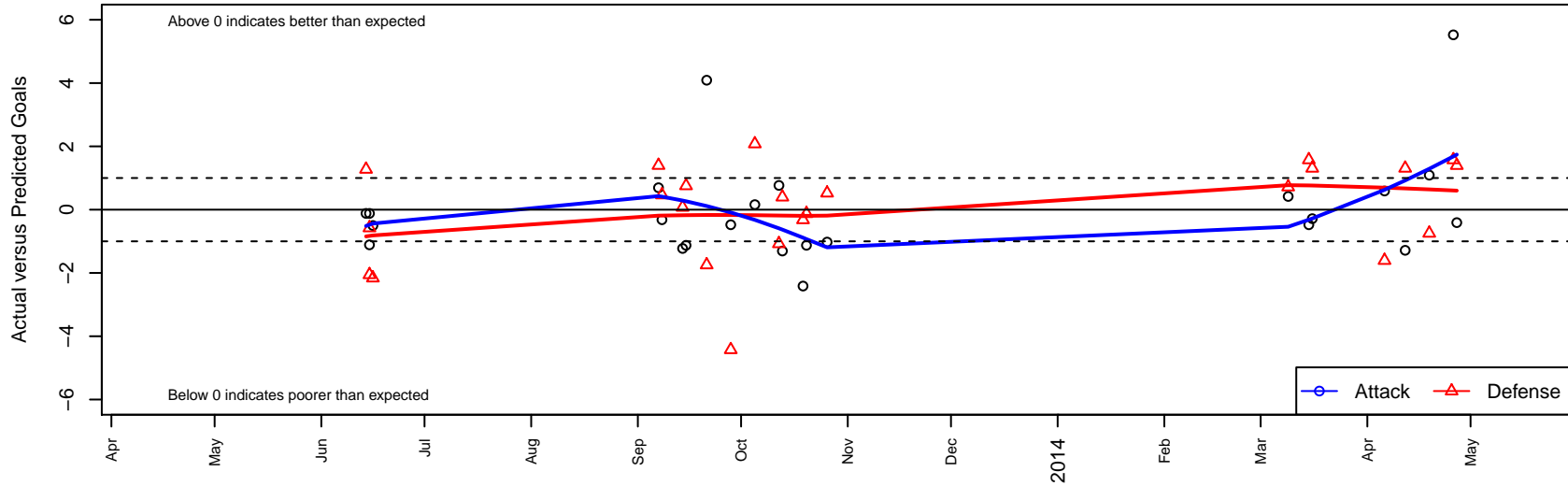
Foothills SC Celtic B02

Foothills SC
 Portland, OR
 B02 total strength=396
 attack=0.35 defense=0.17
 fall league = OPL First Division U11, Spr OPL C
 alt names used:
 Foothills SC Celtic
 Foothills SC Celtic Green

Venues played:
 United Cup U11
 OPL First Division U11
 Spr OPL Chinook Division U11



Foothills SC Celtic B02
 Dots are actual minus expected GF (blue circles) and GA (red triangles).
 Blue line is smoothed change in attack strength. Red is smoothed change in defense strength.



	date	home		away		venue	pred.home	pred.away
26910	2014-04-27	NEU Barca Blue B02	0	Foothills SC Celtic B02	2	Spr OPL Chinook Division U11	1.39	2.4
26703	2014-04-26	Foothills SC Celtic B02	7	Aloha United Porto B02	1	Spr OPL Chinook Division U11	1.48	2.6
26551	2014-04-19	HSC United B02	3	Foothills SC Celtic B02	3	Spr OPL Chinook Division U11	2.25	1.9
26001	2014-04-12	Thelo Spartans B02	1	Foothills SC Celtic B02	0	Spr OPL Chinook Division U11	2.31	1.3
25830	2014-04-06	Foothills SC Celtic B02	3	NEU Barca Blue B02	3	Spr OPL Chinook Division U11	2.41	1.4
24886	2014-03-16	Thelo Spartans B02	1	Foothills SC Celtic B02	1	Spr OPL Chinook Division U11	2.31	1.3
24545	2014-03-15	Aloha United Porto B02	1	Foothills SC Celtic B02	1	Spr OPL Chinook Division U11	2.57	1.5
24186	2014-03-09	CUSC Red B02	1	Foothills SC Celtic B02	2	Spr OPL Chinook Division U11	1.72	1.6
15698	2013-10-26	Washington Timbers Forrest B02	2	Foothills SC Celtic B02	0	OPL First Division U11	2.52	1.0
15244	2013-10-20	Westside Timbers Copa TS B02	3	Foothills SC Celtic B02	0	OPL First Division U11	2.87	1.1
14759	2013-10-19	Foothills SC Celtic B02	0	BSC Portland Gold B02	2	OPL First Division U11	2.41	1.7
14268	2013-10-13	Foothills SC Celtic B02	0	Santos FC Mercury B02	3	OPL First Division U11	1.31	3.4
13713	2013-10-12	Foothills SC Celtic B02	2	River Plate SC Tiburones B02	6	OPL First Division U11	1.23	4.9
12665	2013-10-05	Foothills SC Celtic B02	1	THUSC Beryllium Black B02	2	OPL First Division U11	0.84	4.1
11768	2013-09-28	Aloha United Porto B02	7	Foothills SC Celtic B02	1	OPL First Division U11	2.57	1.5
10794	2013-09-21	Foothills SC Celtic B02	6	HSC United B02	4	OPL First Division U11	1.91	2.3
10365	2013-09-15	PCU Red B02	2	Foothills SC Celtic B02	0	OPL First Division U11	2.75	1.1
9822	2013-09-14	Foothills SC Celtic B02	0	Bend FC Timbers Red B02	3	OPL First Division U11	1.23	3.1
9403	2013-09-08	Capital FC Timbers Black -was Red B02	3	Foothills SC Celtic B02	1	OPL First Division U11	3.47	1.3
8878	2013-09-07	Santos FC Mercury B02	2	Foothills SC Celtic B02	2	OPL First Division U11	3.40	1.3
1347	2013-06-16	Foothills SC Celtic B02	1	FC Oak Hill Force B02	5	United Cup U11	1.50	2.8
1089	2013-06-15	THUSC Beryllium Green B02	2	Foothills SC Celtic B02	3	United Cup U11	1.42	3.1
1092	2013-06-15	Foothills SC Celtic B02	0	Crossfire Oregon LO SC Kubri Green B02	5	United Cup U11	1.11	2.9
922	2013-06-14	Washington Timbers Lime B02	1	Foothills SC Celtic B02	2	United Cup U11	2.27	2.1